

G I I WE TO G I I WED I N

In this charette we are asked to have a hacker mindset to use simple, frugal, and inclusive techniques to combat the problems that architecture, conceived by an alien culture designing for an exotic climate had created. Having basic knowledge and a perceived notion of their way of life, we are to propose ways to add to their houses that engage in their daily practices. We are to use our alien culture and knowledge to design for an exotic climate, or repeat the failures of history to try to fix what we did by creating more problems.

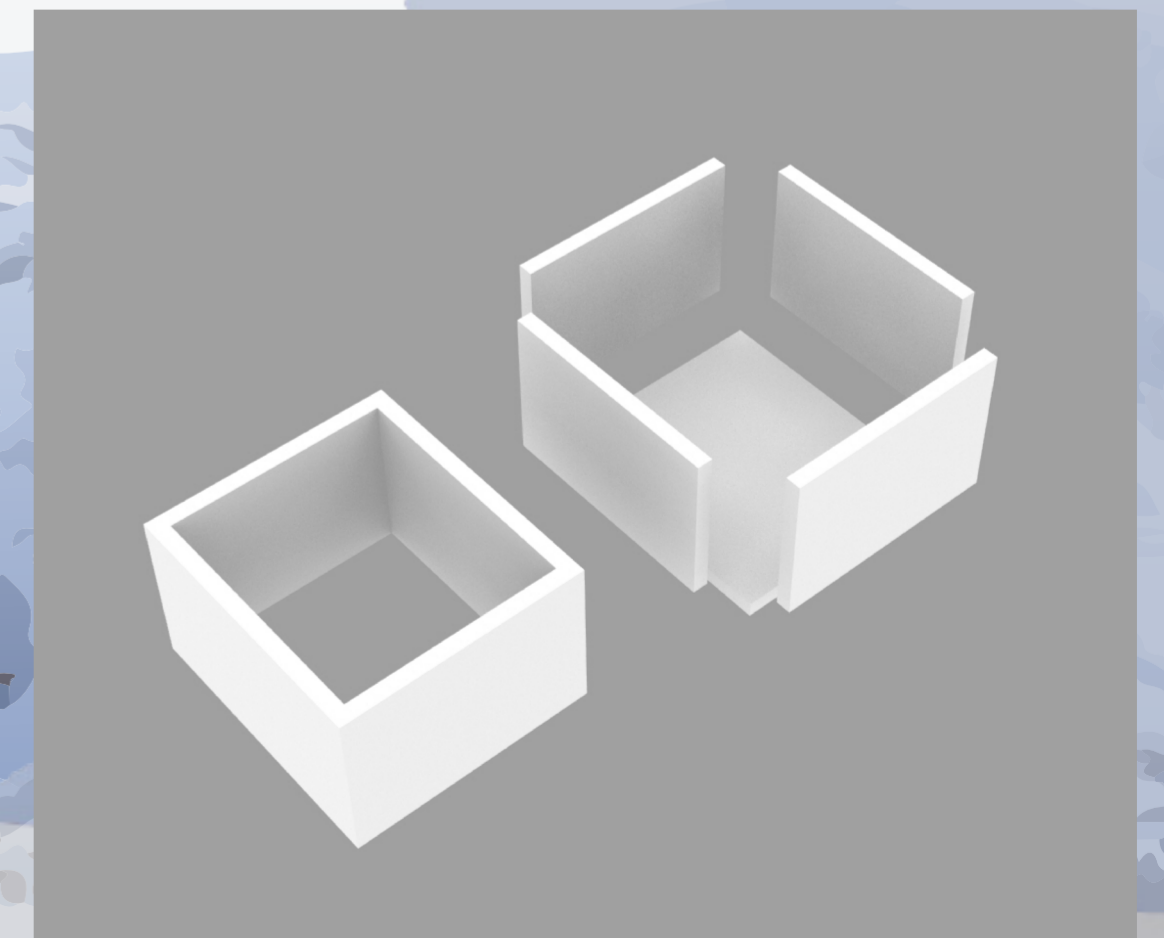
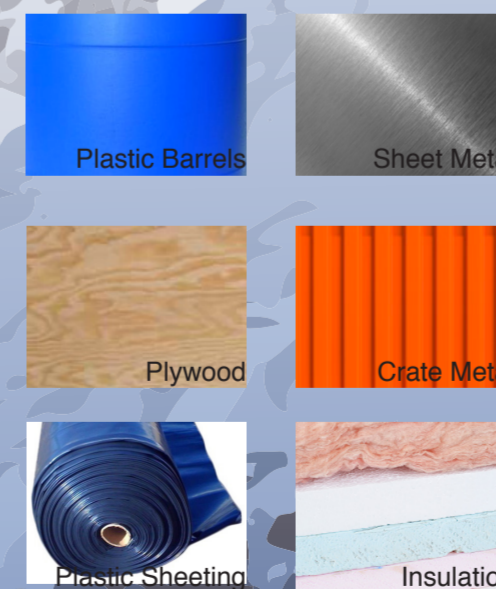
As a culture, we are raised to look for flaws in others and try fix them. We are quick to judge and come to the rescue, when it is not always needed. Inuit peoples have lived successfully for hundreds of years without the influence of western culture. It was when we determined their type of living as inhumane according to our standards that we forced our beliefs and philosophies on them resulting in their crumbling economy. It is our culture that is the demise of theirs. Our architecture, laws, social norms and ways of life have undermined their practices and beliefs. Nunavik might have climate change, overcrowding, housing, water and health issues, but its biggest problem is the government's lack of subsidization and intrusion of western culture.

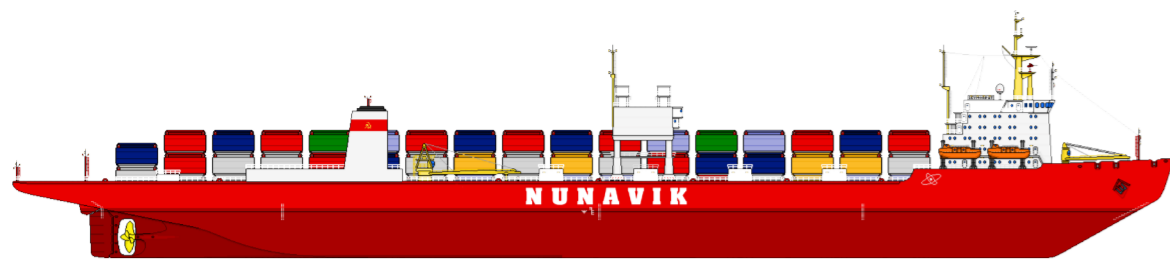


The Inuit peoples have so much to teach us. They are creative, resourceful, resilient and community oriented. Which is why with the modular unit, they are free to design and build what they choose. Cargo ships deliver goods and material a few times throughout the year via metal and wood crates. We propose pre-cutting the walls into sized modular panels kept together by bolts and screws to be shipped and delivered to the communities. After delivery of the goods, people are free to disassemble the crates to use the panels to then build their own structures or furniture.

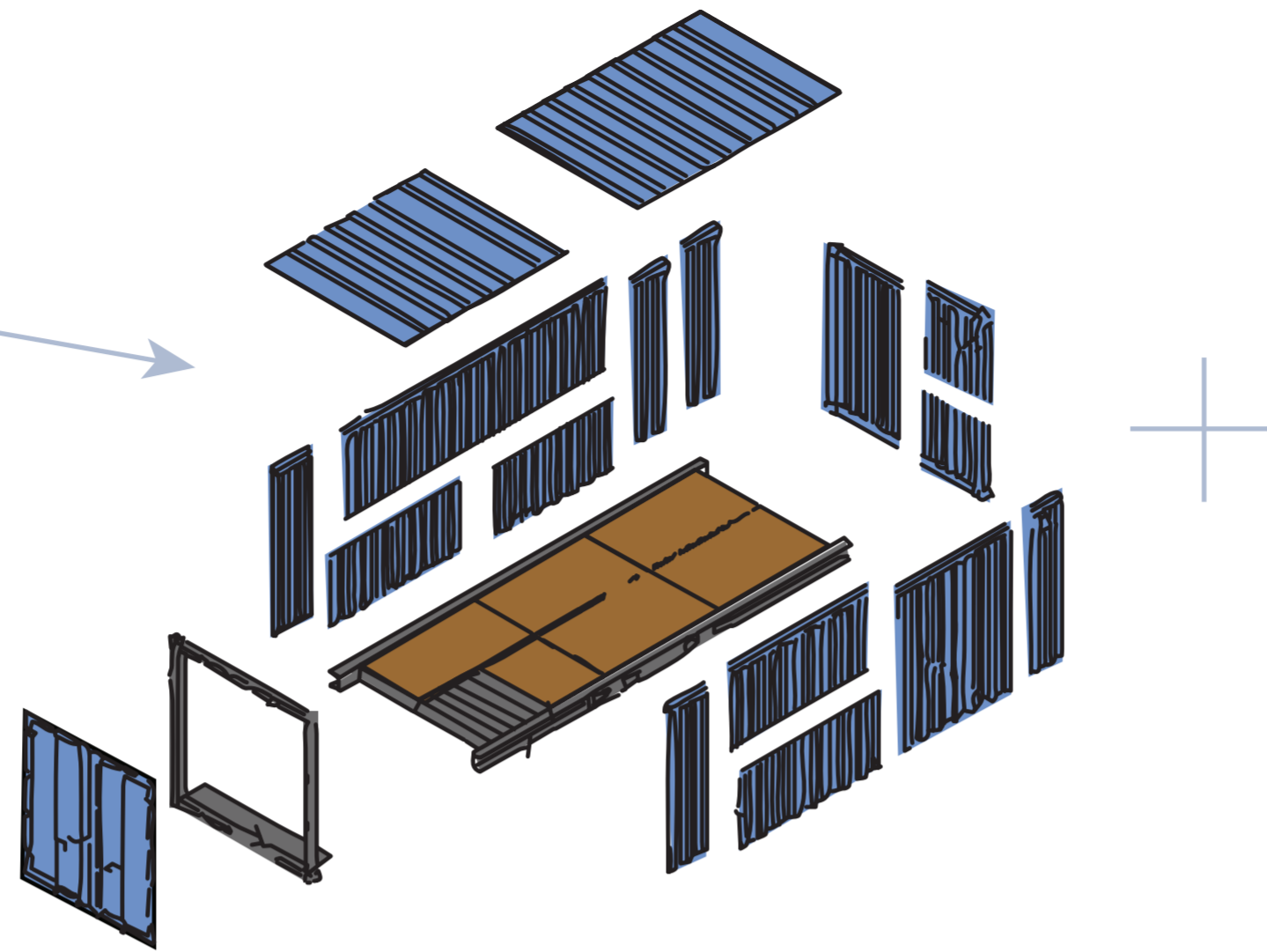
With the variety of waste and scrap materials available already, we encourage experimenting and adding to the pre-cut panels. With a simple design, the crate panels are only the starting point for unique design.

Found Materials:



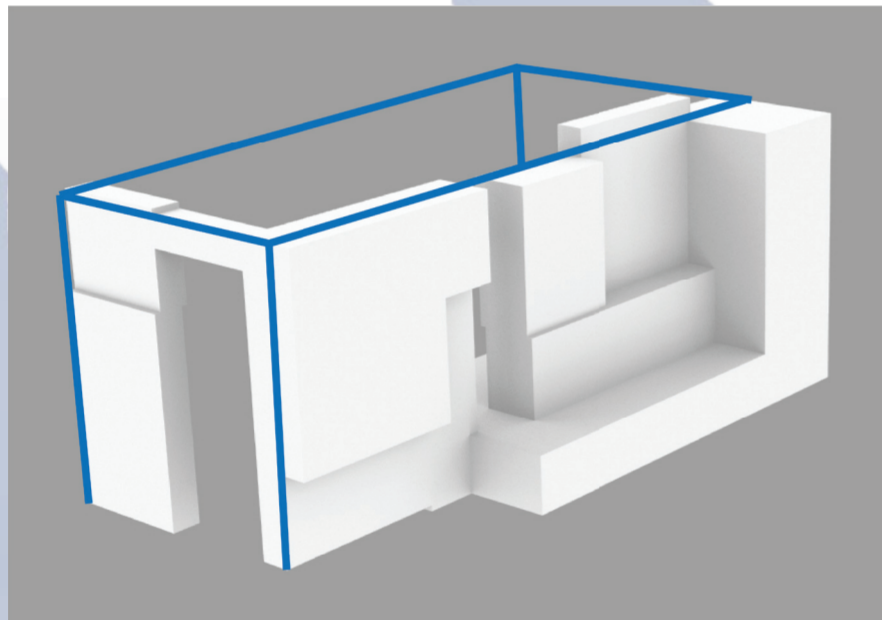


Crates have an unlimited amount pre-cut designs

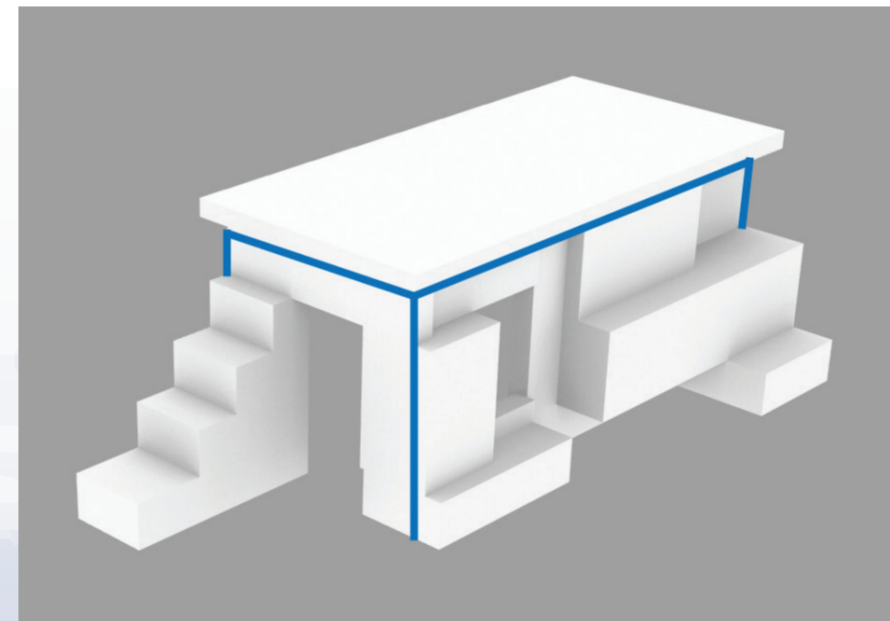


The modular rectangle design was proposed due to efficiency and skill level it needs. The rectangle has all 90 degree angles that are easily cut with the tools present. The versatility and combinations let people create their desired space for their specific needs. The collage-like interlocking proposed would be good in extending and connecting spaces together. The igloo concept where spaces were interconnected with families and groups would portray the community values that the indigenous people have.

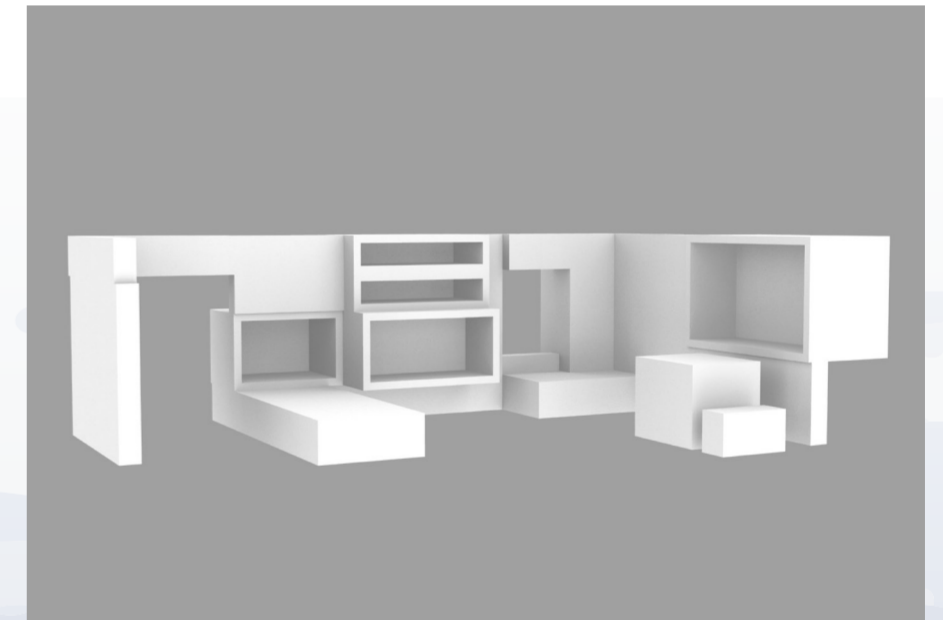
Building off the crate frame, modular units are able to be added in a variety of ways according to the user.



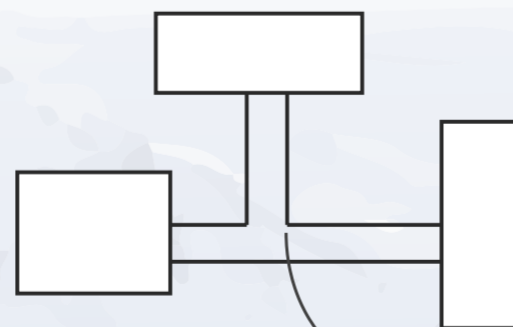
Stacking crates offer the ability to expand and create a large community of shelters.



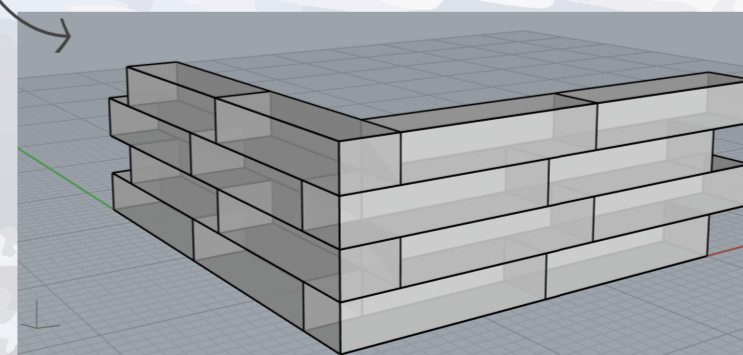
The diverse types of modular units allows for interior furniture and wall to be assembled.



Using the frames of the crates, it gives a base on what to go with as a structure. The use of waste and scrap materials would be different for every space. The collage of panels and its different materials give character to each space and would be different for each space. The texture and the composition of each panel would vary in persons' subjective taste and likes. The modular concept is a tool for them, and not a structure that forces them to be in. It is a concept that allows the people to do it in their needs.



The crates are able to be put on skins or on the ground with connectors to shelters.



Extending these rectangular panels would create furniture in both interior and exterior. The versatility of the rectangle would create things such as stairs for a possible second floor or a bench on the exterior. On the interior, there could be beds, tables and chairs. The hollowed out prisms made out of these rectangles would create a space for shelving needs, and in some areas could add spare materials for insulation. Activities such as hunting, fishing and others would create a space for them to store.